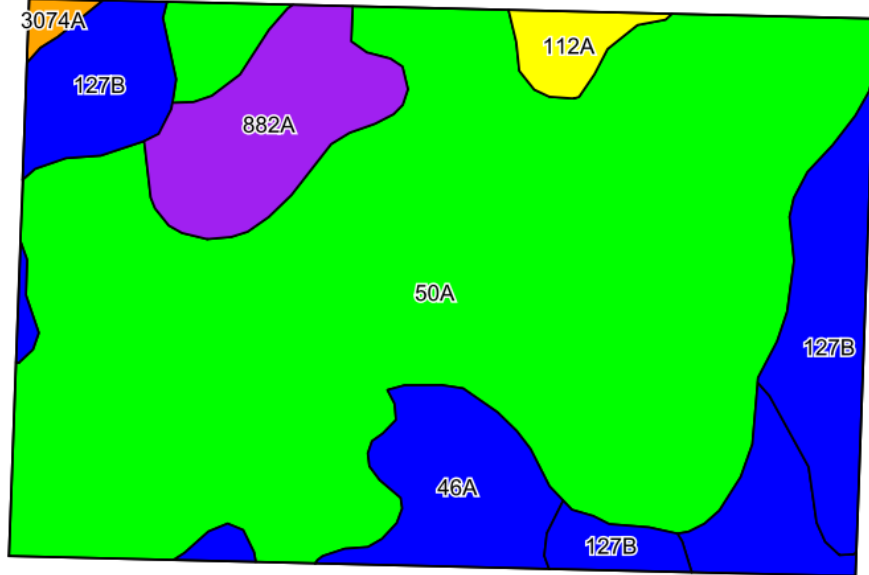
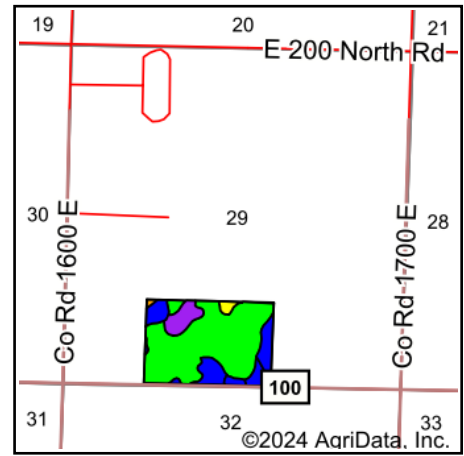


# Soils Map



©2024 AgriData, Inc.

Soils data provided by USDA and NRCS.



State: **Illinois**  
 County: **Christian**  
 Location: **29-11N-1W**  
 Township: **Rosamond**  
 Acres: **60.04**  
 Date: **12/26/2024**

Maps Provided By:  
  
 CUSTOMIZED ONLINE MAPPING  
 © AgriData, Inc. 2023 www.AgriDataInc.com



Area Symbol: IL021, Soil Area Version: 18

Code	Soil Description	Acres	Percent of field	Il. State Productivity Index Legend	Subsoil rooting <sup>a</sup>	Corn Bu/A	Soybeans Bu/A	Wheat Bu/A	Oats Bu/A <sup>b</sup>	Sorghum <sup>c</sup> Bu/A	Grass-legume <sup>e</sup> hay, T/A	Crop productivity index for optimum management	*n NCCPI Soybeans
**50A	Virden silty clay loam, 0 to 2 percent slopes	41.60	69.2%		FAV	**186	**60	**75	**94	0	**5.40	**138	67
**127B	Harrison silt loam, 2 to 5 percent slopes	7.48	12.5%		FAV	**177	**54	**69	**92	0	**5.70	**129	67
46A	Herrick silt loam, 0 to 2 percent slopes	5.38	9.0%		FAV	181	58	73	94	0	5.50	133	70
882A	Oconee-Darmstadt-Coulterville silt loams, 0 to 2 percent slopes	4.29	7.1%		FAV	145	47	54	0	108	4.30	107	64
112A	Cowden silt loam, 0 to 2 percent slopes	1.00	1.7%		FAV	159	49	63	0	119	4.90	117	66
**3074A	Radford silt loam, 0 to 2 percent slopes, frequently flooded	0.29	0.5%		FAV	**167	**52	**66	**89	0	**5.00	**122	66
Weighted Average						181	57.9	72.3	85.4	9.7	5.4	133.8	*n 67

Soils data provided by USDA and NRCS. Soils data provided by University of Illinois at Champaign-Urbana.

**Table: Optimum Crop Productivity Ratings for Illinois Soil EFOTG are sourced from Bulletin 811 calculated Map Unit Base Yield Indices, and adjusted (Adj) for slope, erosion, flooding, and surface texture.** Publication Date: 02-08-2023

Crop yields and productivity (B811 EFOTG) are maintained at the following USDA web site: 2023 Illinois Soil Productivity and Yield Indices:  
<https://efotg.sc.egov.usda.gov/#/state/IL/documents/section=2&folder=52809>

\*\* Base indexes from Bulletin 811 adjusted for slope, erosion, flooding, and surface texture according to the II. Soils EFOTG

**b** Soils in the southern region were not rated for oats and are shown with a zero "0".

**c** Soils in the northern region or in both regions were not rated for grain sorghum and are shown with a zero "0".

**e** Soils in the well drained group were not rated for grass-legume and are shown with a zero "0".

\*n: The aggregation method is "Weighted Average using all components"