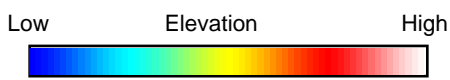
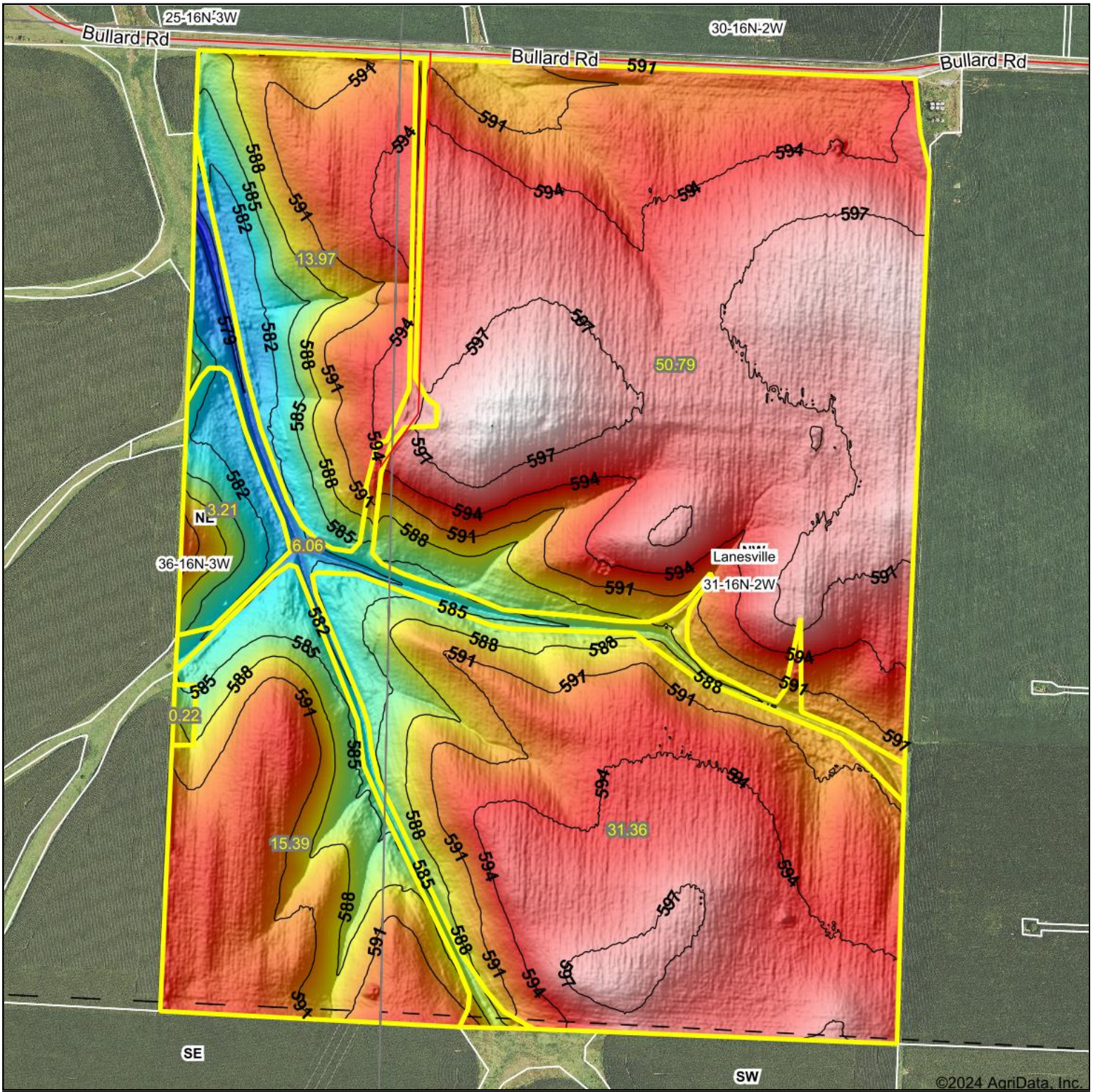
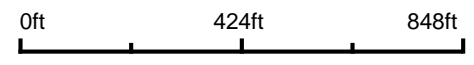


Topography Hillshade



© AgriData, Inc. 2023
Field borders provided by Farm Service Agency as of 5/21/2008.

Source: USGS 1 meter dem
Interval(ft): 3
Min: 577.1
Max: 599.5
Range: 22.4
Average: 592.3
Standard Deviation: 4.46 ft



31-16N-2W
Sangamon County
Illinois

Boundary Center: 39.798325, -89.367583