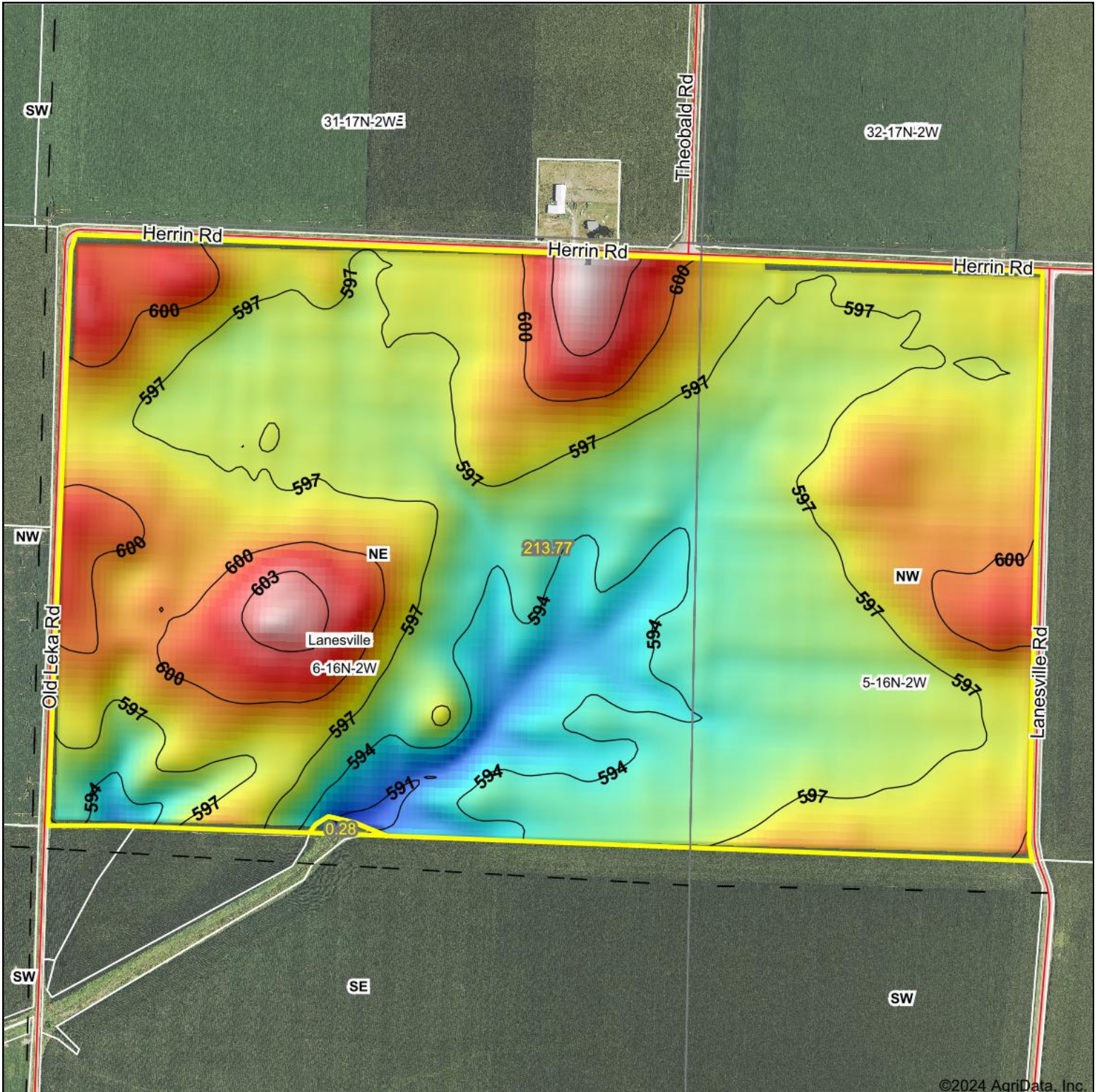
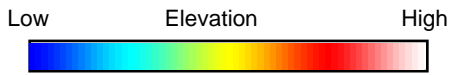


Topography Hillshade



©2024 AgriData, Inc.



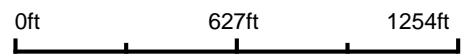
Maps Provided By:



© AgriData, Inc. 2023 www.AgriDataInc.com

Field borders provided by Farm Service Agency as of 5/21/2008.

Source: USGS 10 meter dem
 Interval(ft): 3
 Min: 583.7
 Max: 606.0
 Range: 22.3
 Average: 597.2
 Standard Deviation: 2.53 ft



9/23/2024

6-16N-2W
Sangamon County
Illinois

Boundary Center: 39.870581, -89.350994